

Washington, DC Farmers' Markets

How Walkable and Accessible are District Markets for Residents?

- Waterbodies
- District Wards
- Sidewalks
- Markets

Farmers' markets contribute to **community health** and **enhance local economies**. In Washington, DC, where food deserts persist in some neighborhoods, markets can offer residents a reliable source of produce and pantry staples while supporting small-scale farmers and local artisans.

Examining disparity patterns and zones of opportunity is key to improving equitable access to markets for District residents. This spatial and network analysis visualizes the **landscape of market walkability and accessibility** for residents by examining reasonable walking times, pedestrian-friendly areas, and seasonal availability by neighborhood.

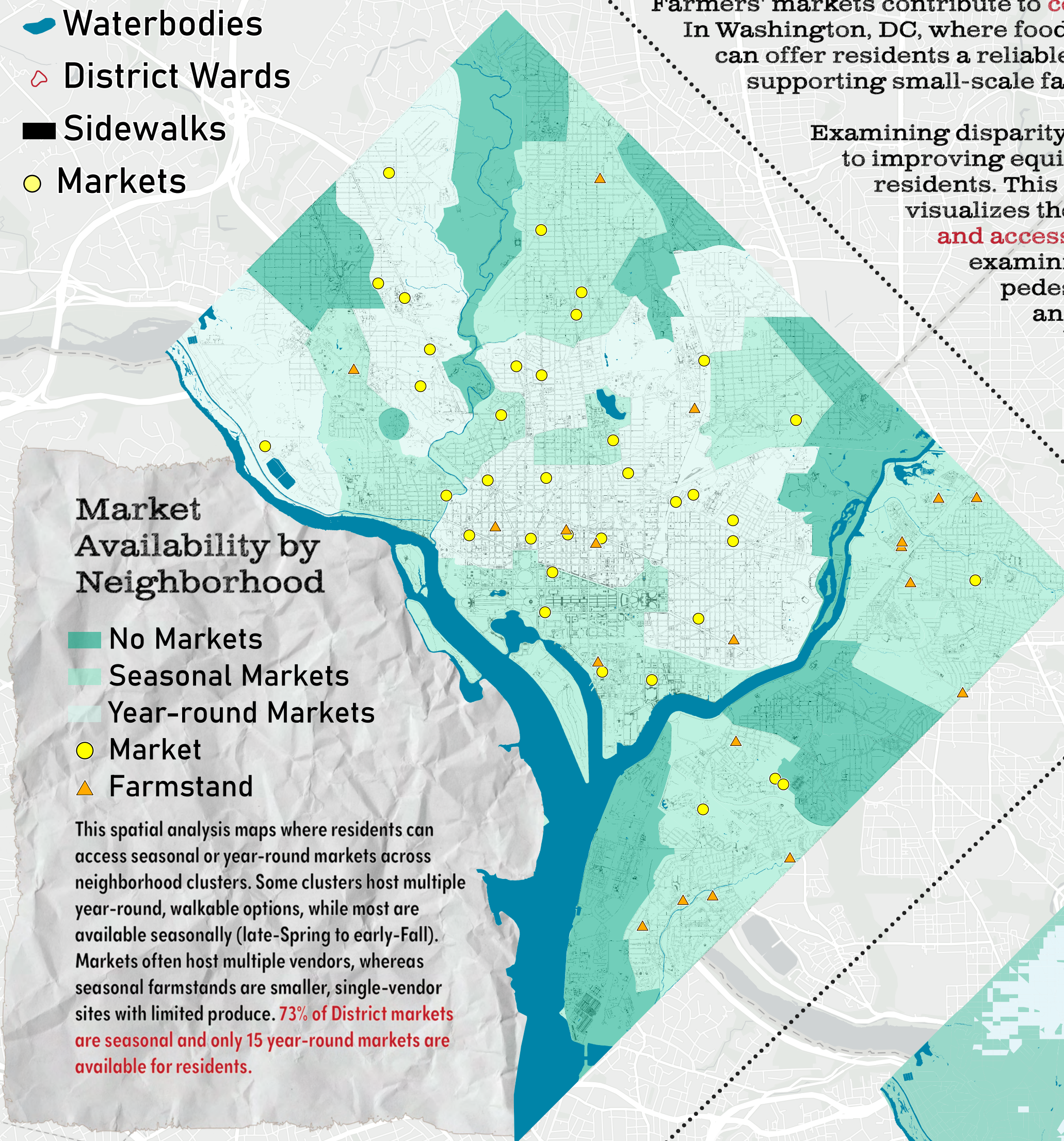
56 farmers' markets and seasonal farmstands. *

702,250 Population (Census 2024 Population Estimate)

Approximately 40+ regional farmers and producers participate in District markets.

Ward 8 has 1 full-service grocery store; Ward 7 has 3 grocery stores for 177,407 residents. **

District markets attract **hundreds of thousands** of shoppers and foot traffic annually. ***



Pedestrian Friendliness Index

- Excellent Walkable Area
- Fair Walkable Area
- Poor Walkable Area

The Pedestrian Friendliness Index (PFI) is an analysis developed by the Environmental Protection Agency that evaluates the **walkability of an area based on key metrics**, such as sidewalk availability and street network design. Areas with high PFI scores have well-maintained pedestrian infrastructure. Areas with low PFI scores are car-dependent with limited sidewalks. Market locations are shown in relation to PFI-scored areas to illustrate potential walking conditions for residents. **48% of total District markets are in high PFI-scored areas, while 82% of markets in Wards 7 and 8 are in fair to poor PFI-scored areas.**

* Number includes full-service, active farmers' markets and farmstands where the primary service offerings are produce and pantry staples, as of Spring 2025.

** Data based on active full-service grocery stores, as of July 2025.

*** Estimate based on FRESHFARM Market 2022 Annual Report. FRESHFARM Market operates approximately 50% of farmers' markets and farmstands in the District.

Lauren Johnson
Montgomery College / GEOG 270
Data Source: District of Columbia Government, Shapefile: Farmers Markets, OpenDataDC, 2023; District Department of Transportation, Shapefile: Pedestrian Friendliness Index Census Blocks, OpenDataDC, 2022; ESRI; ArcGIS Online
Photo Source: unsplash.com
Applications: ArcGIS Pro, Adobe Illustrator and Creative Cloud

Walking Time to Closest Farmers' Market

- up to 5 mins
- 5-10 mins
- 10-20 mins
- 20-30 mins

This network analysis of **average walking times** to a neighborhood farmers' market details the time it would take for residents to walk **one way** to their closest market, following established pedestrian infrastructure and pathways. Time increments are set to **30 minutes or less** to represent reasonable travel for grocery shopping. Areas outside of the network would require 30 minutes or more of walking round-trip. The network examines **walkability within Wards**, which are council divisions that define communities with distinct histories, cultures, and demographics.